



# SCHNITTBOGEN

**burda** 6/96

Ergänzender und notwendiger Bestandteil zum Gebrauch des Heftes. Sämtliche Modelle stehen unter Urheberschutz.

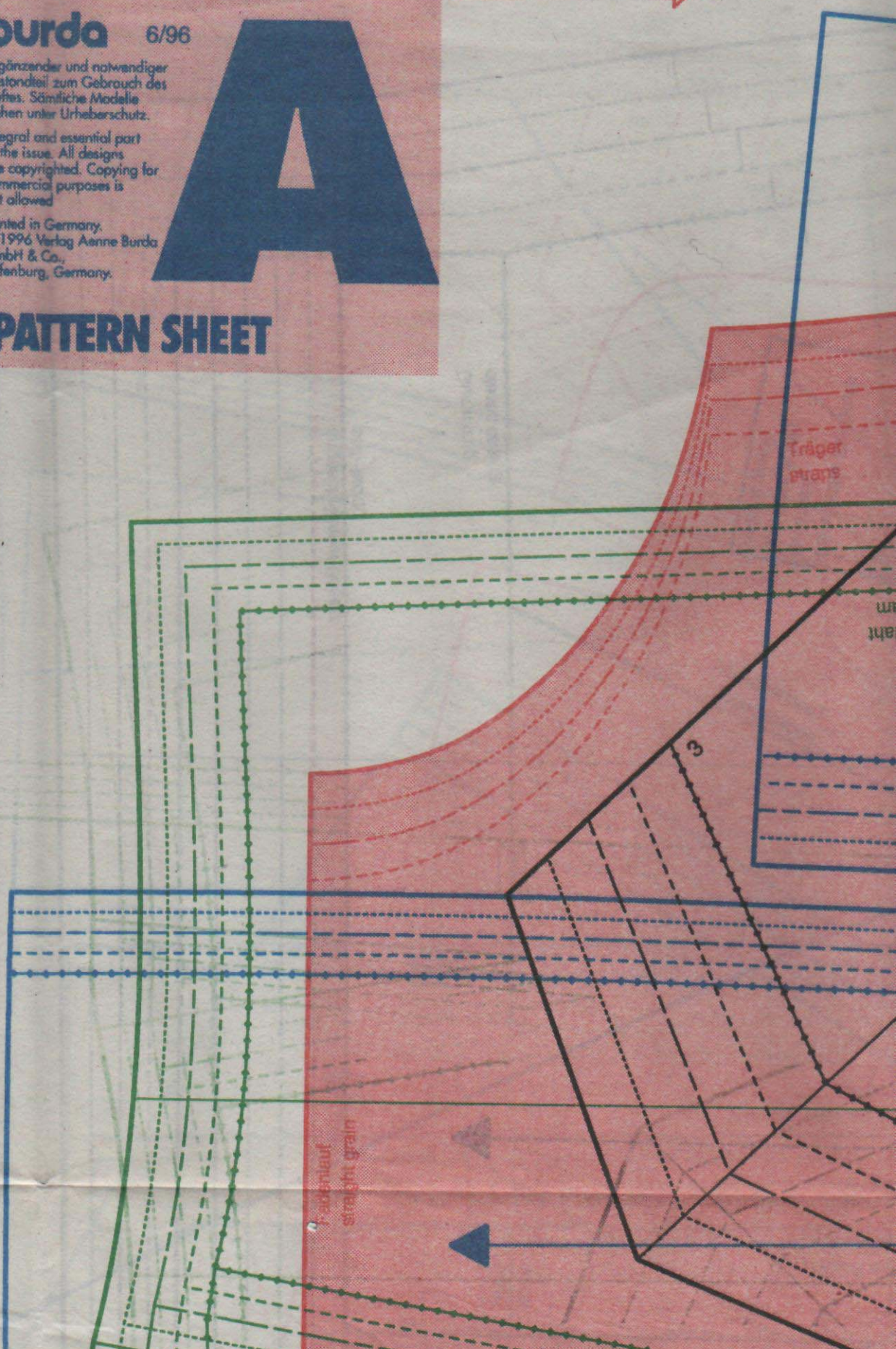
Integral and essential part of the issue. All designs are copyrighted. Copying for commercial purposes is not allowed.

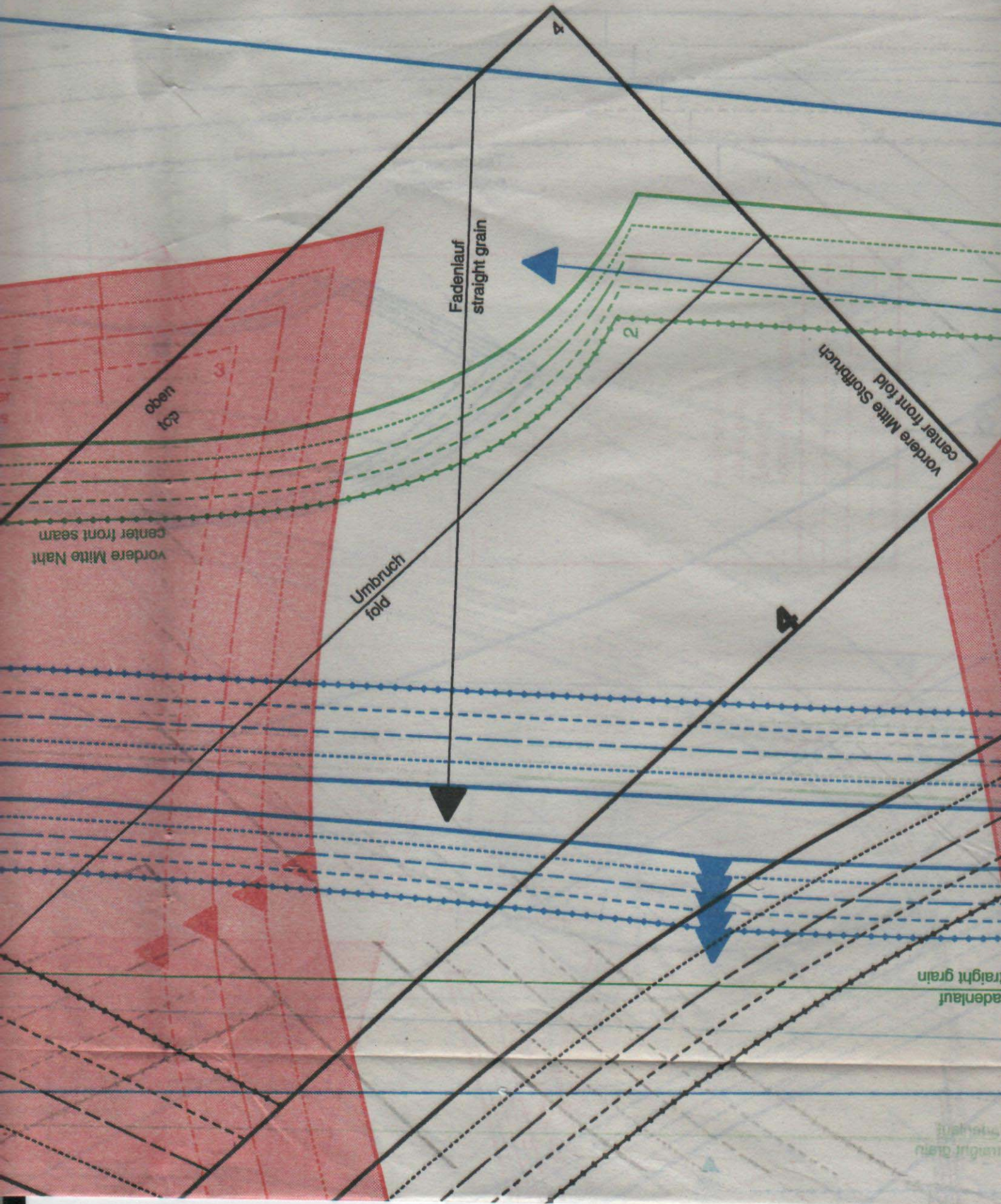
Printed in Germany.  
© 1996 Verlag Aenne Burda GmbH & Co.,  
Offenburg, Germany.



# PATTERN SHEET

Suchnummer  
Reference numbers





4

5

2

5

Vordere  
Center front

3

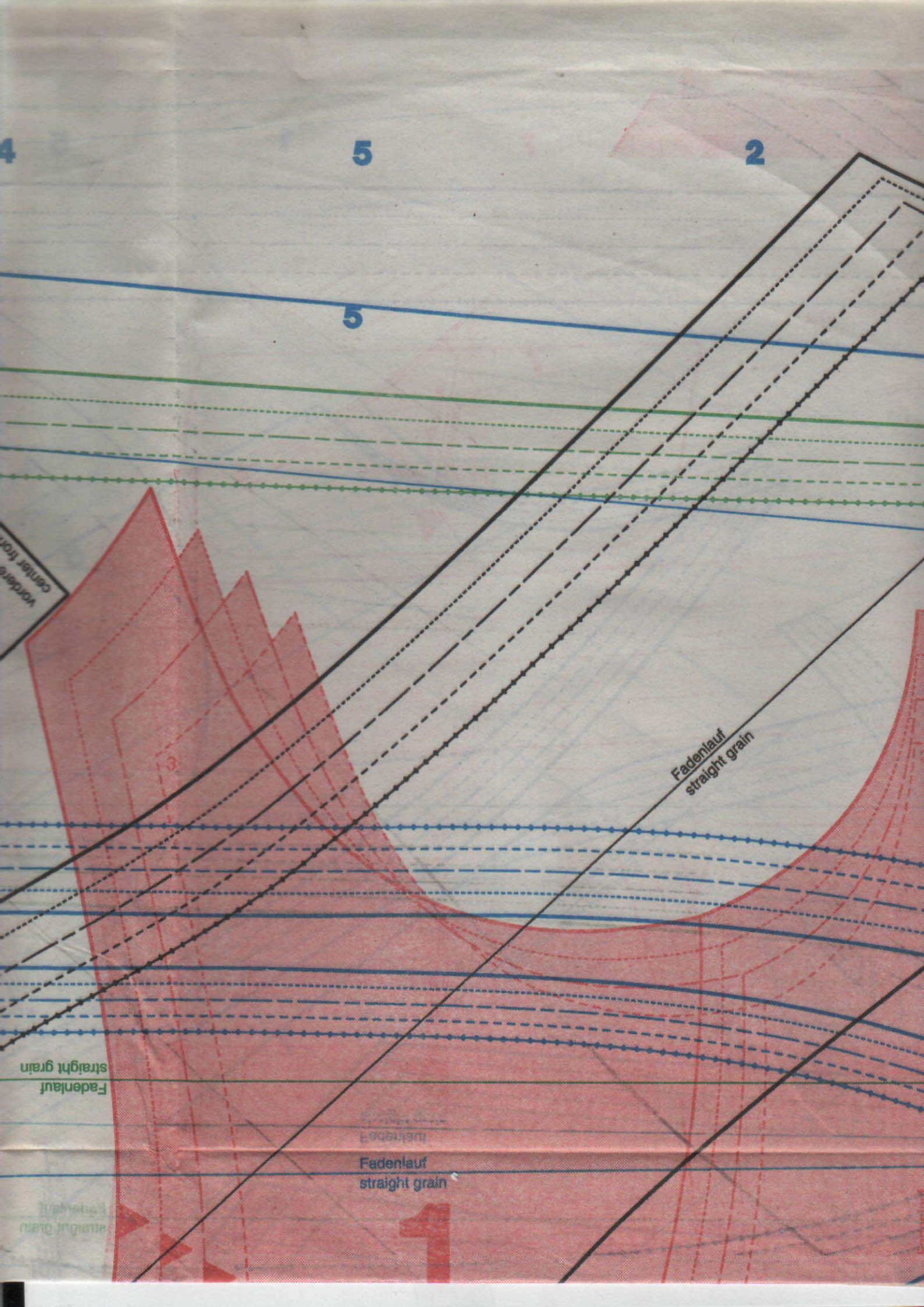
Fadenlauf  
straight grain

Fadenlauf  
straight grain

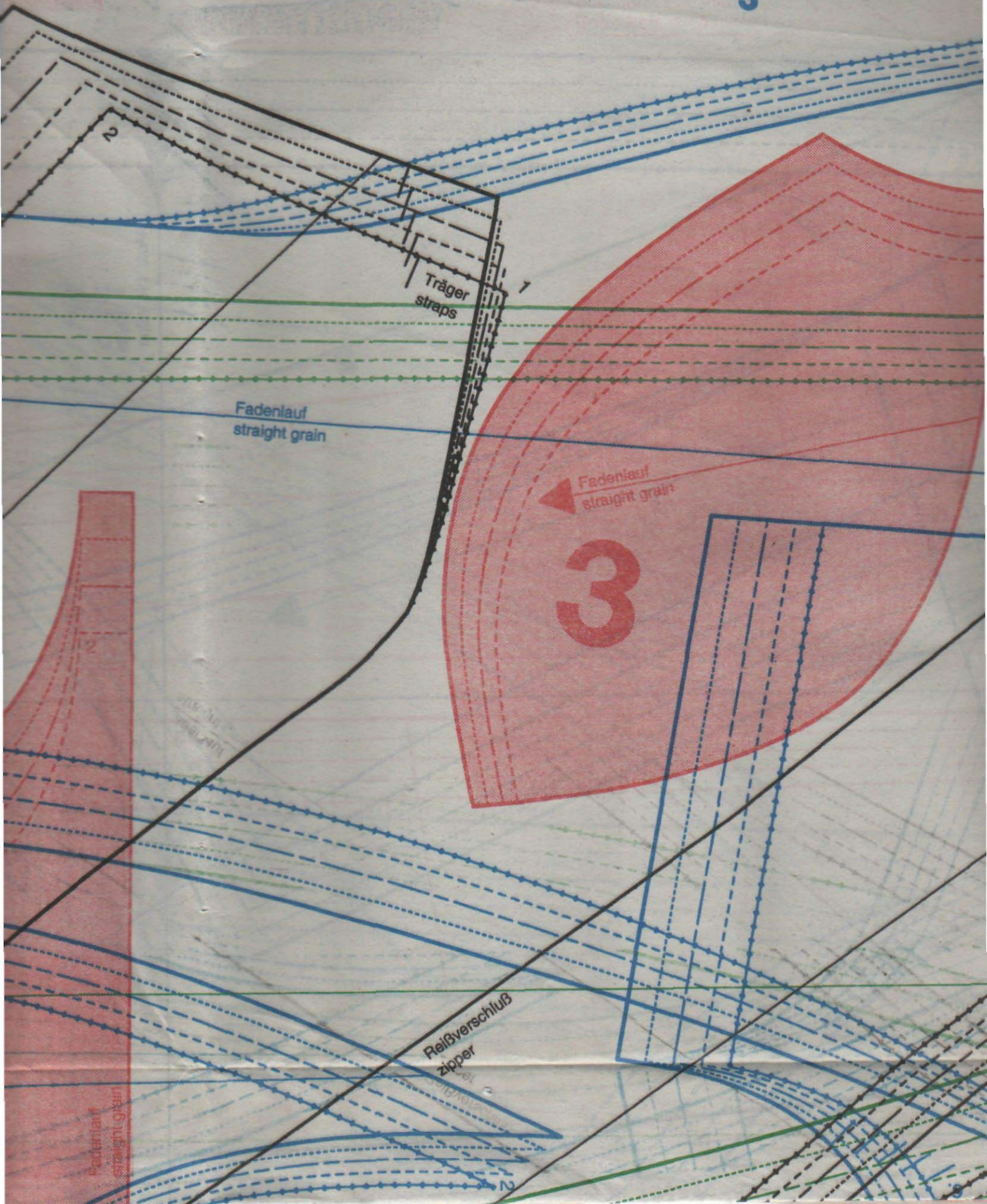
Fadenlauf  
straight grain

1

Fadenlauf  
straight grain



3



B,C,D

6.

3

6.

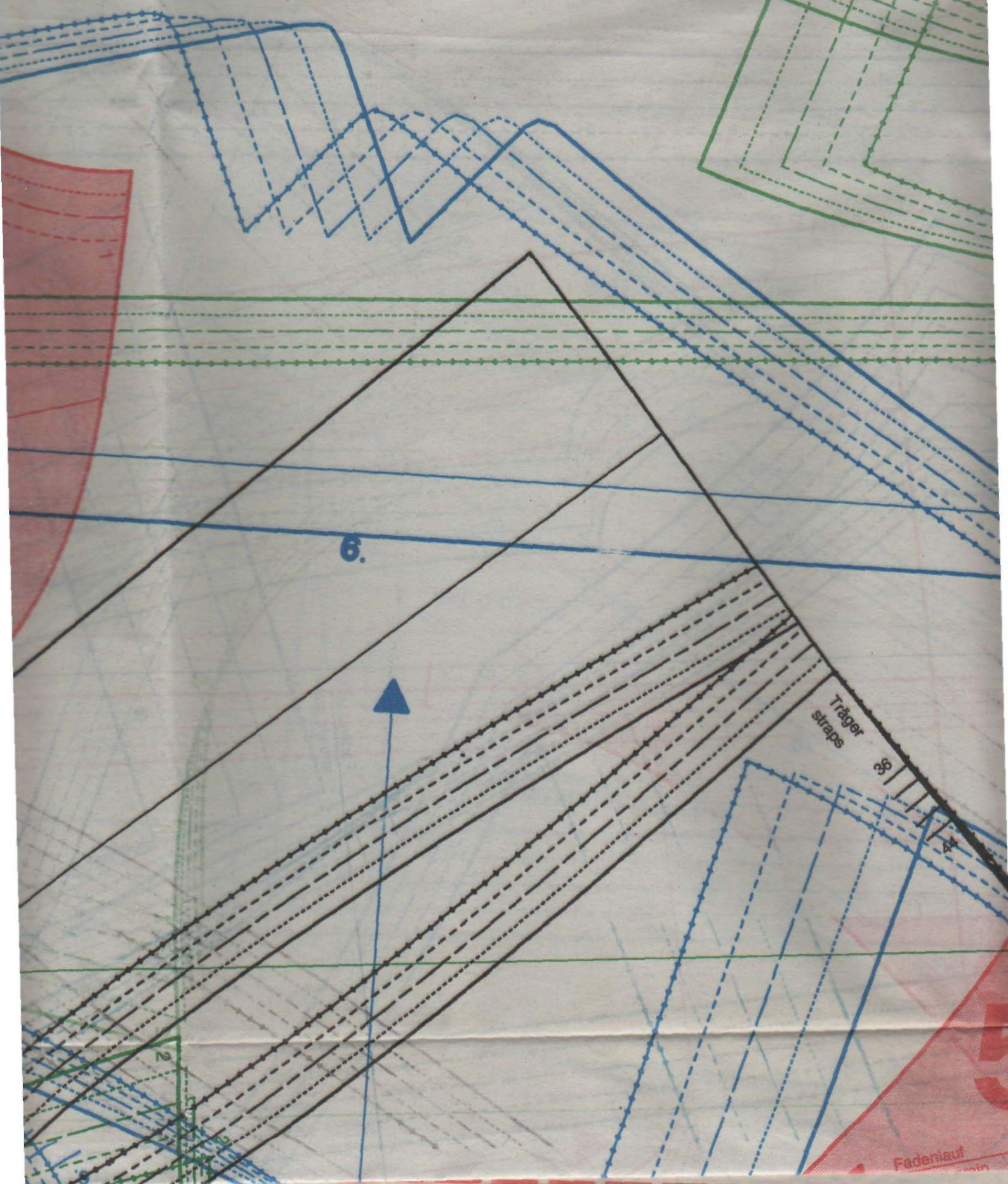
Träger  
straps

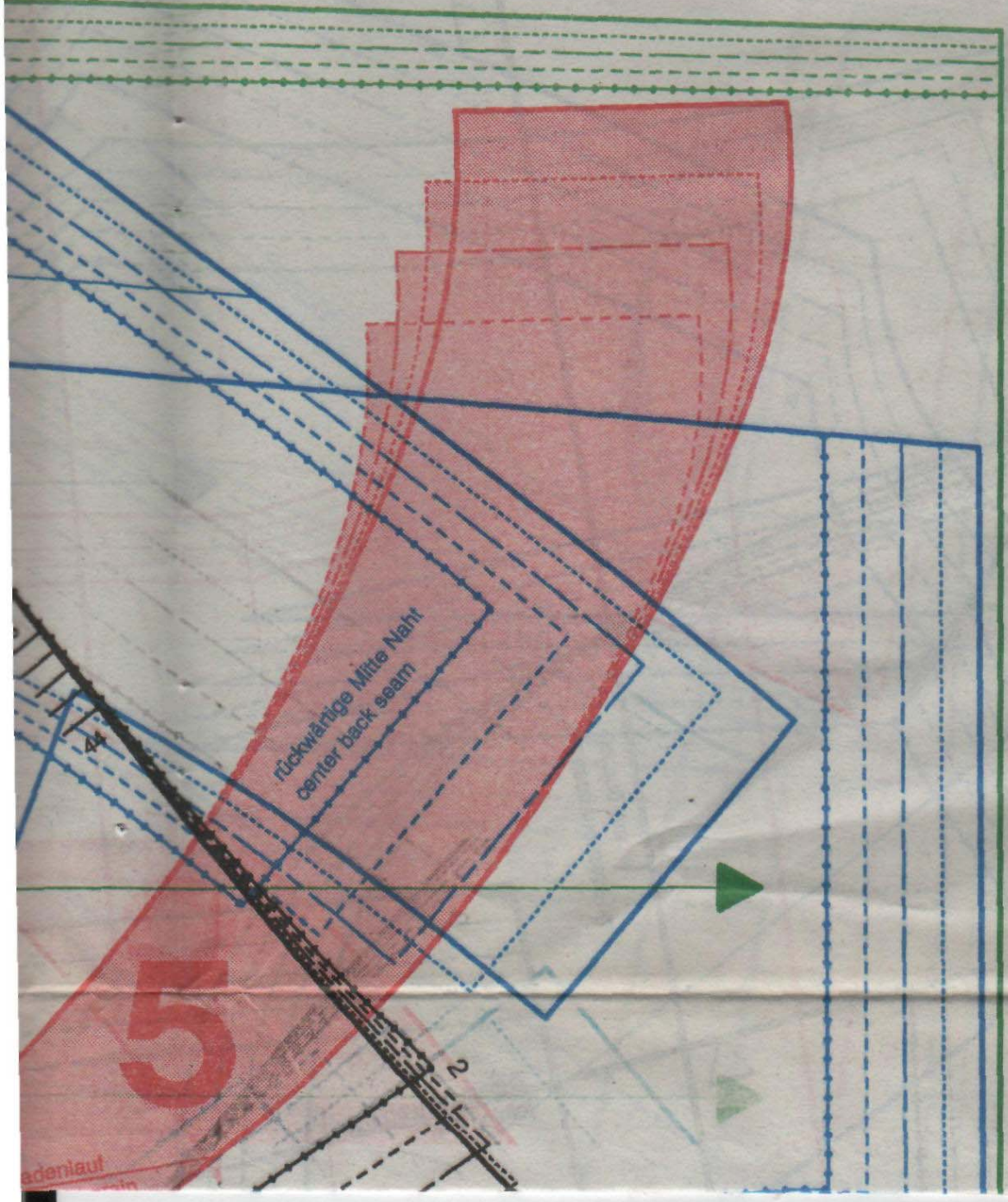
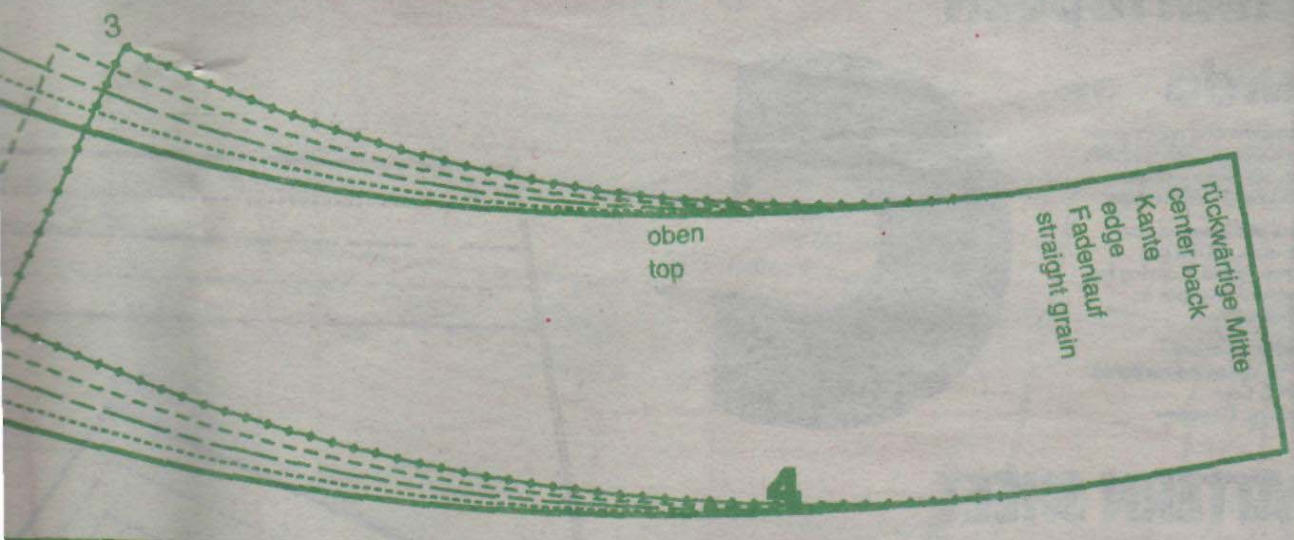
88

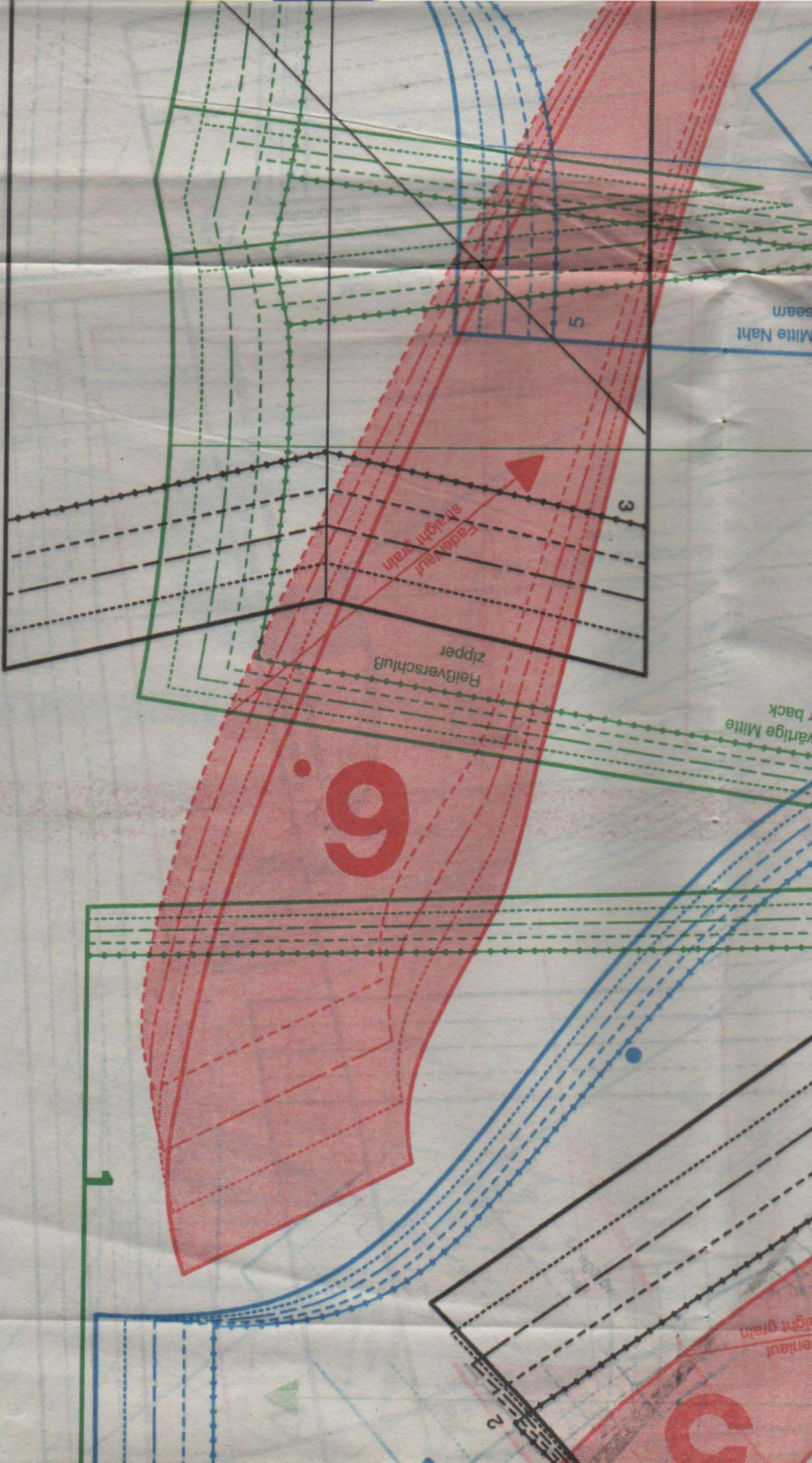
44

2

Fadenaut







6

Erdelhaul  
richtig trennen

Reißverschluss  
zipper

Värlige Mitte  
back

Mitte Naht  
seam

enthaul  
right grain

3

2

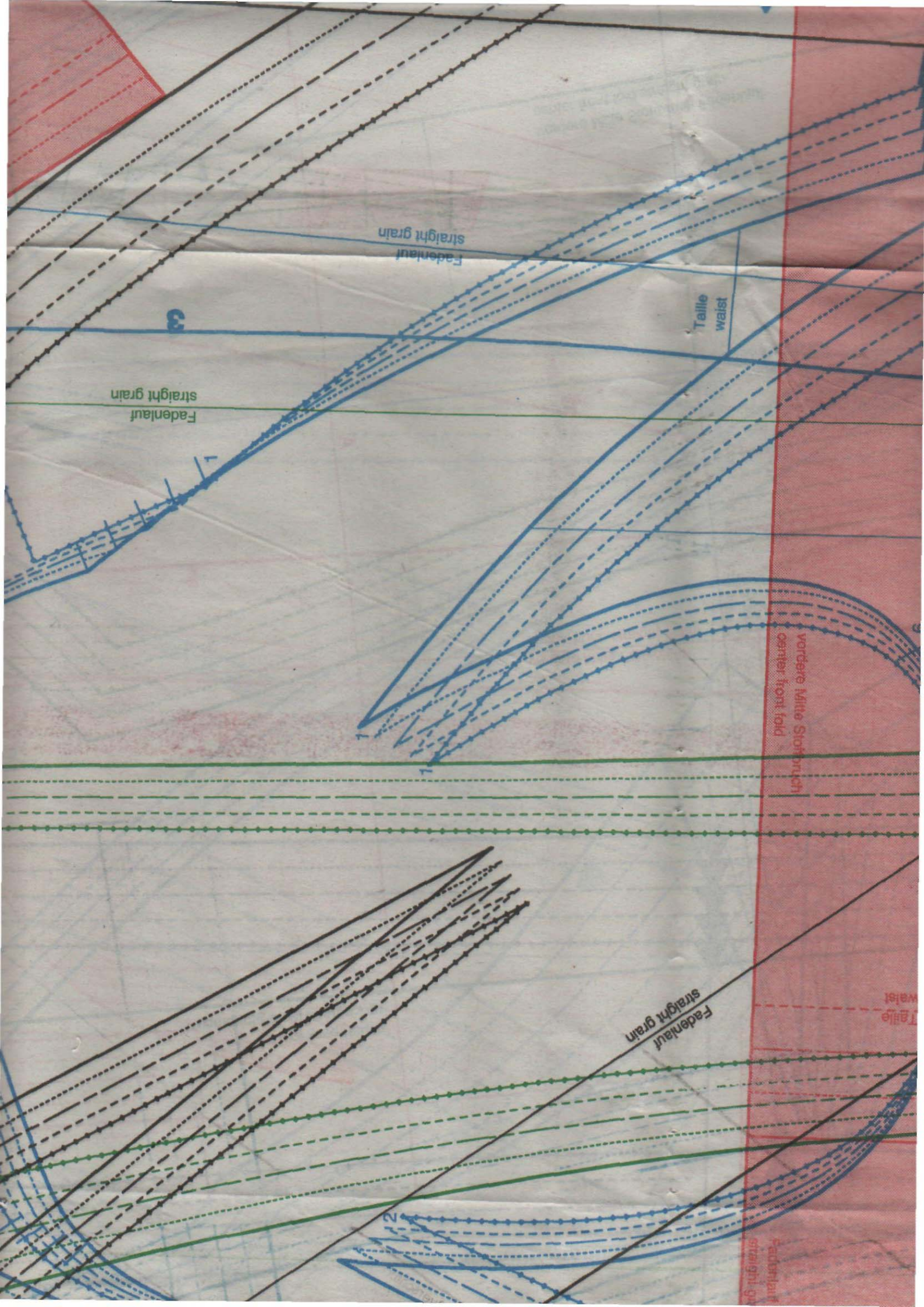
5

3

1







Fadenlauf  
straight grain

Taille  
waist

Fadenlauf  
straight grain

3

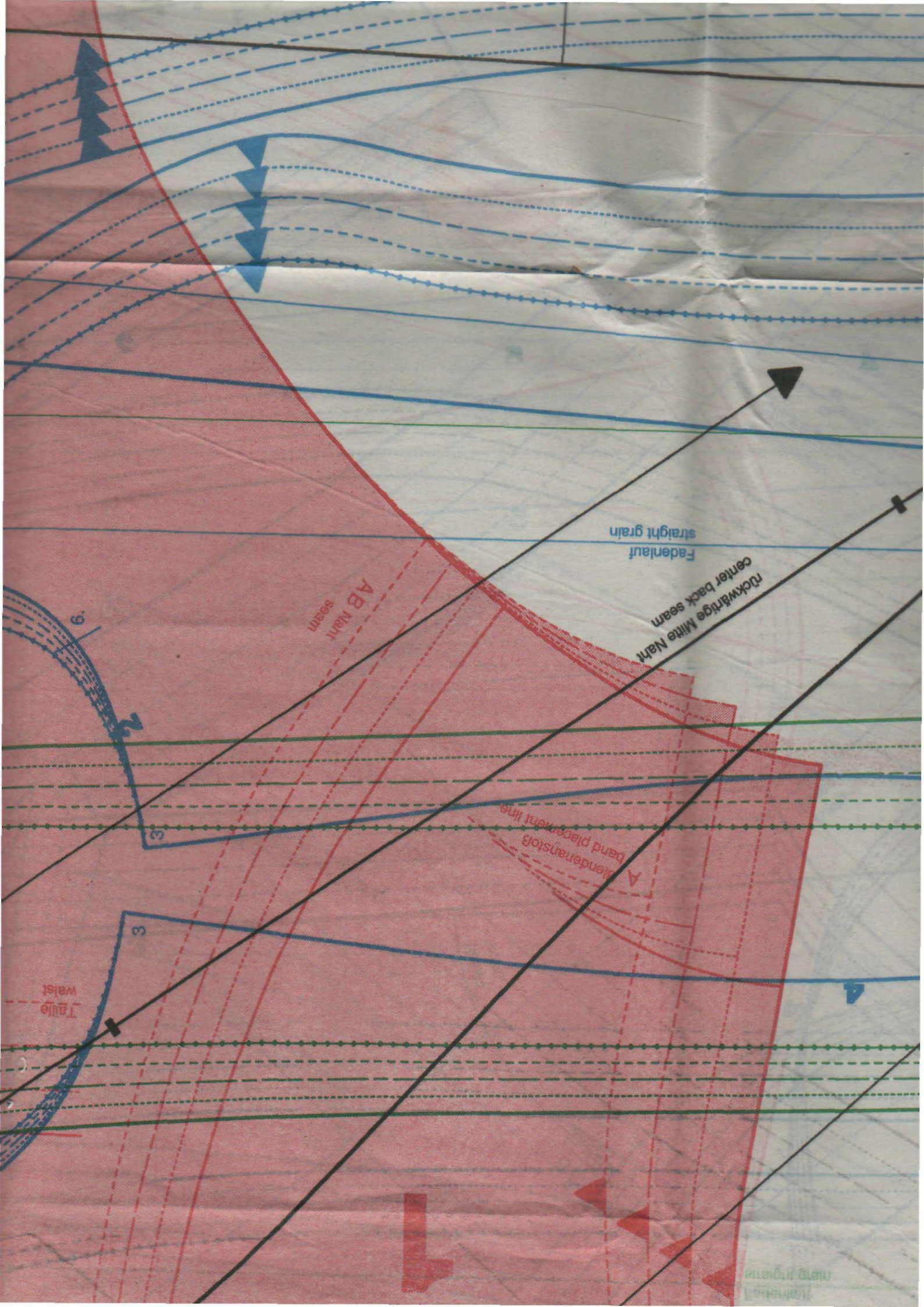
vordere Mitte Stoffbruch  
center front fold

Fadenlauf  
straight grain

Taille  
waist

Fadenlauf  
straight grain

2

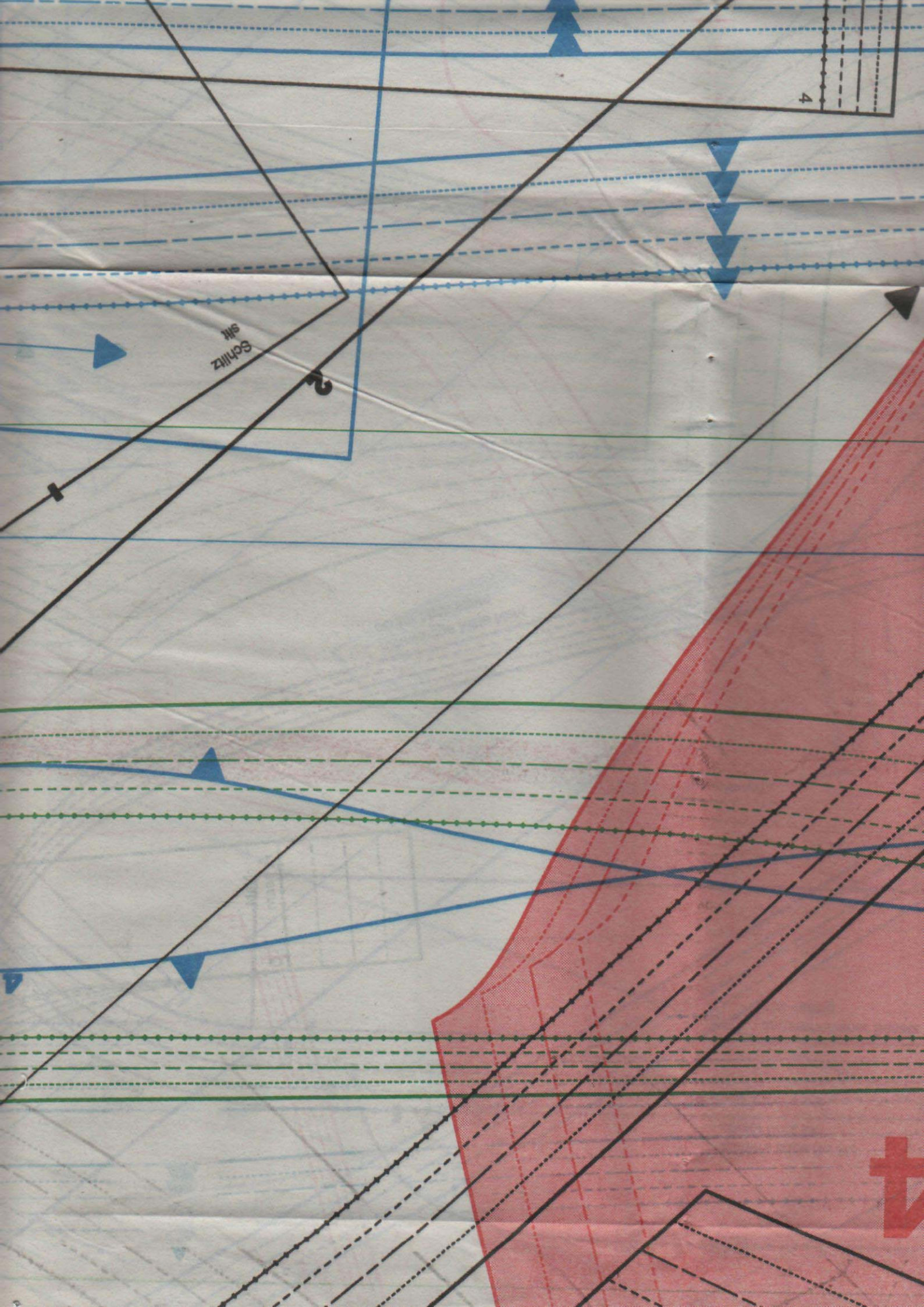


4

Schlitz  
SM

2

4

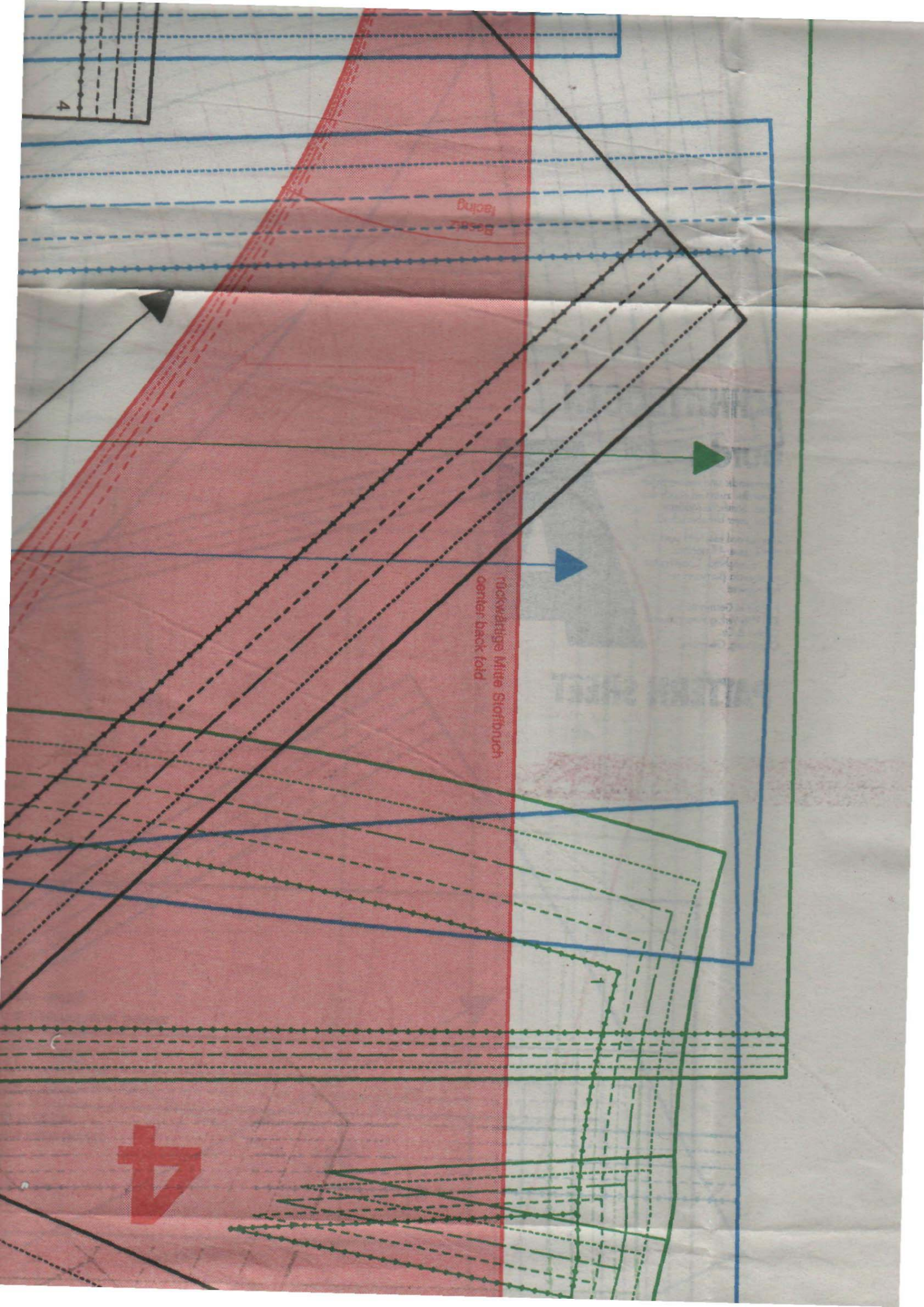


4

Back  
Facing

ruckwärtige Mitte Stofbruch  
center back fold

4

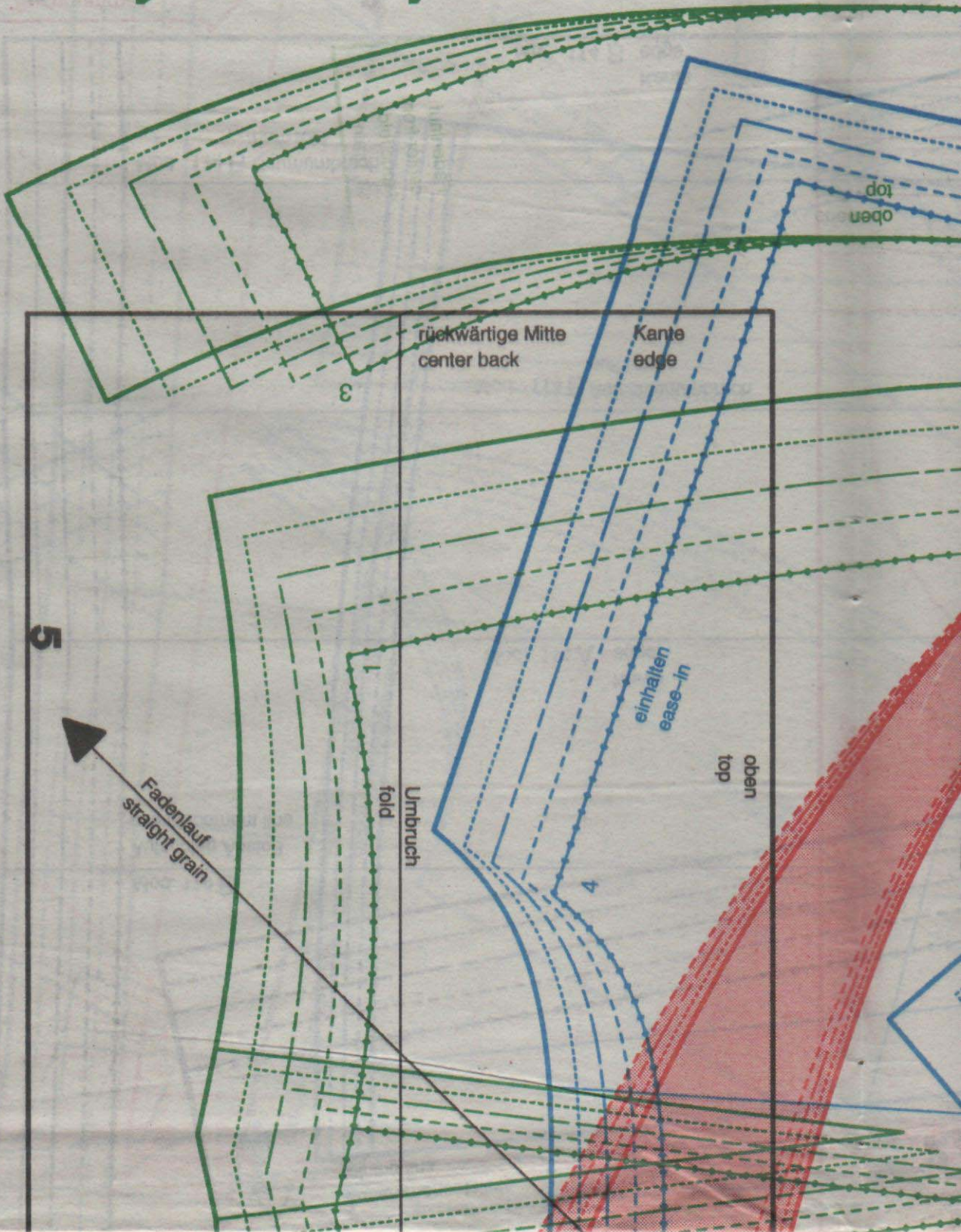




5

1

4



2

3

vordere Mitte  
 Stoffbruch  
 Fadenlauf  
 center front  
 fabric fold  
 str. grain

2

vordere Mitte Stoffbruch Fadenlauf  
 center front fold straight grain

rückwärtige Mitte Naht  
 center back seam

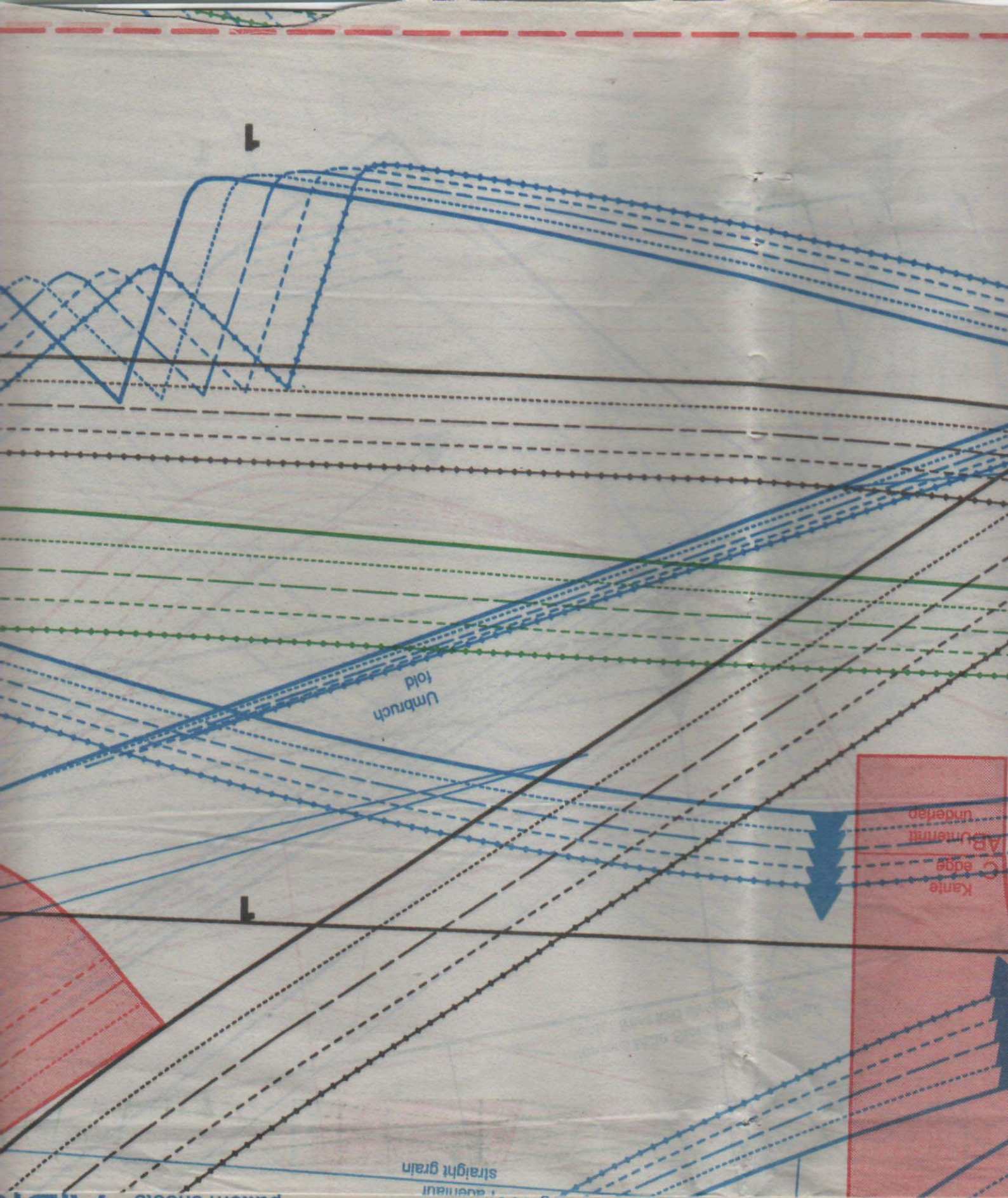
5

oben top

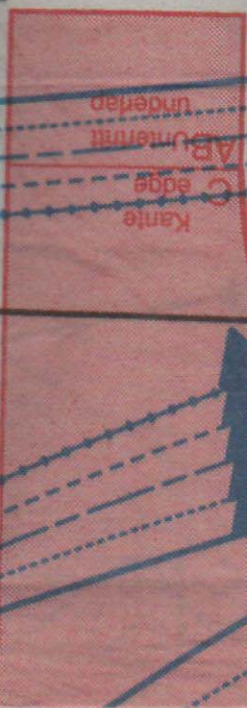
4

Fadenlauf  
 straight grain

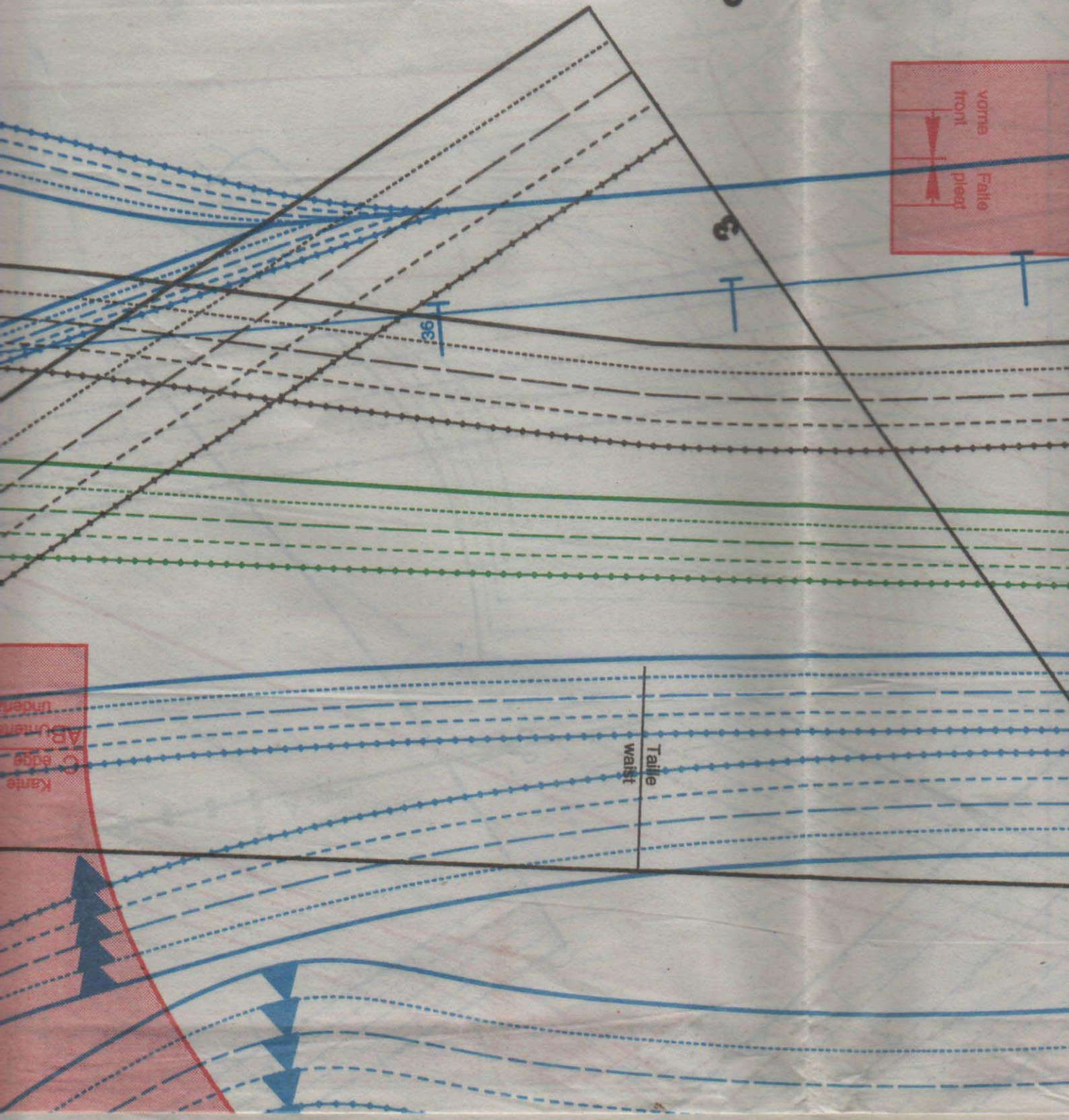
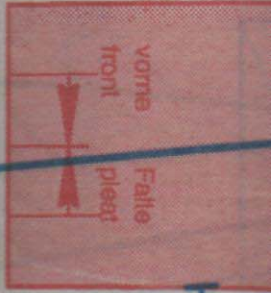
A,B,C,D



Lumbruch  
fold



3





4

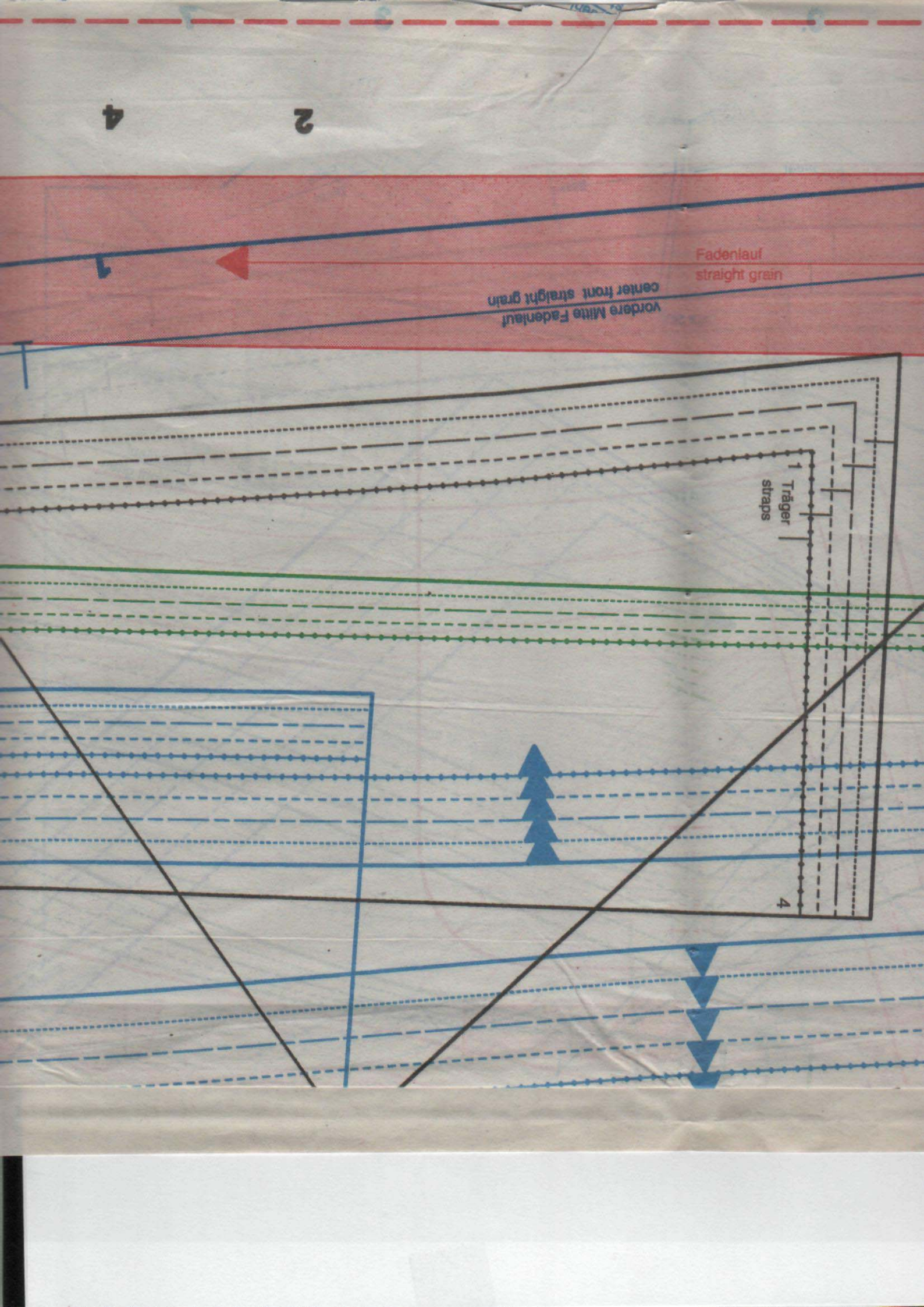
2

Fadenlauf  
straight grain

vordere Mitte Fadenlauf  
center front straight grain

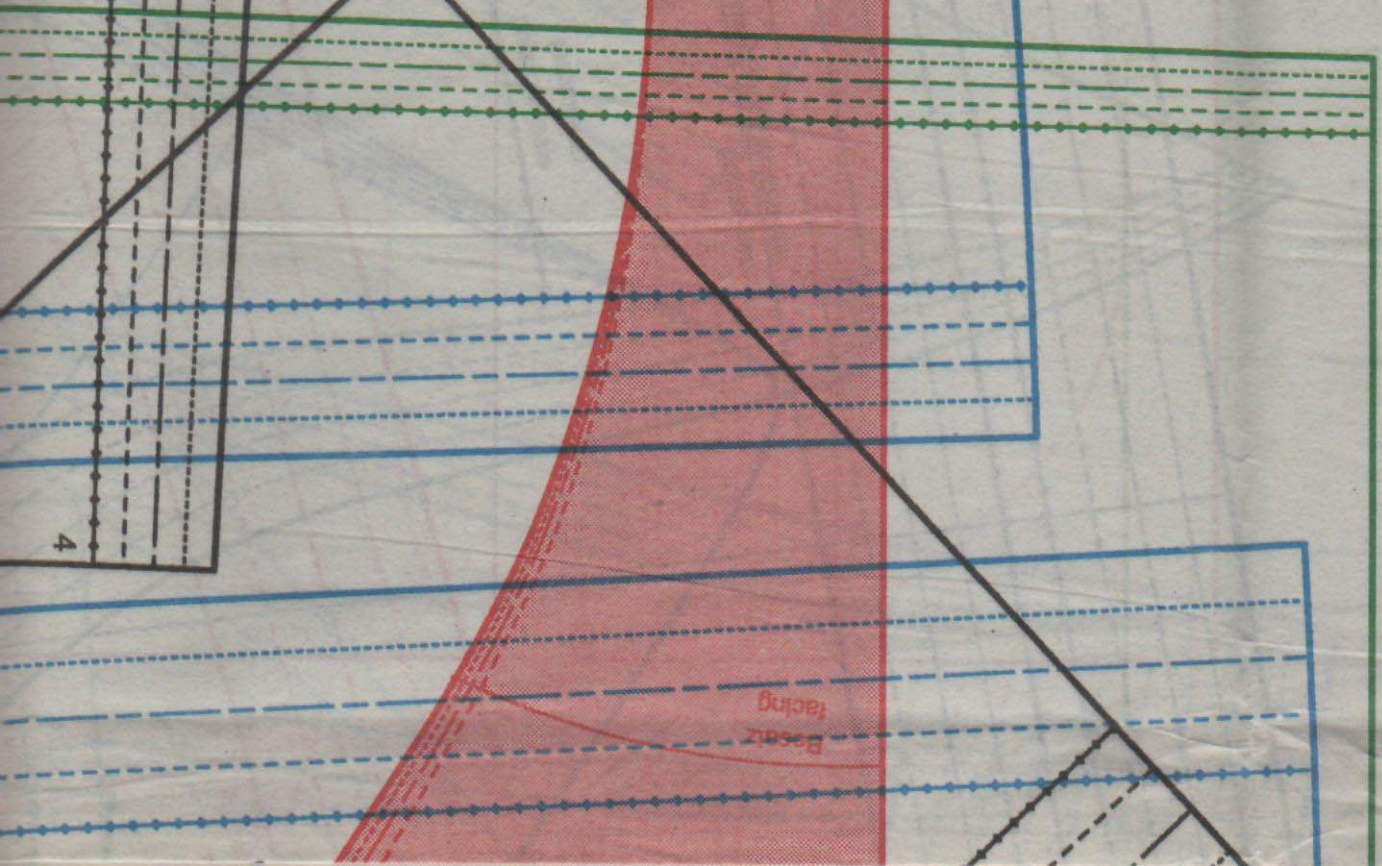
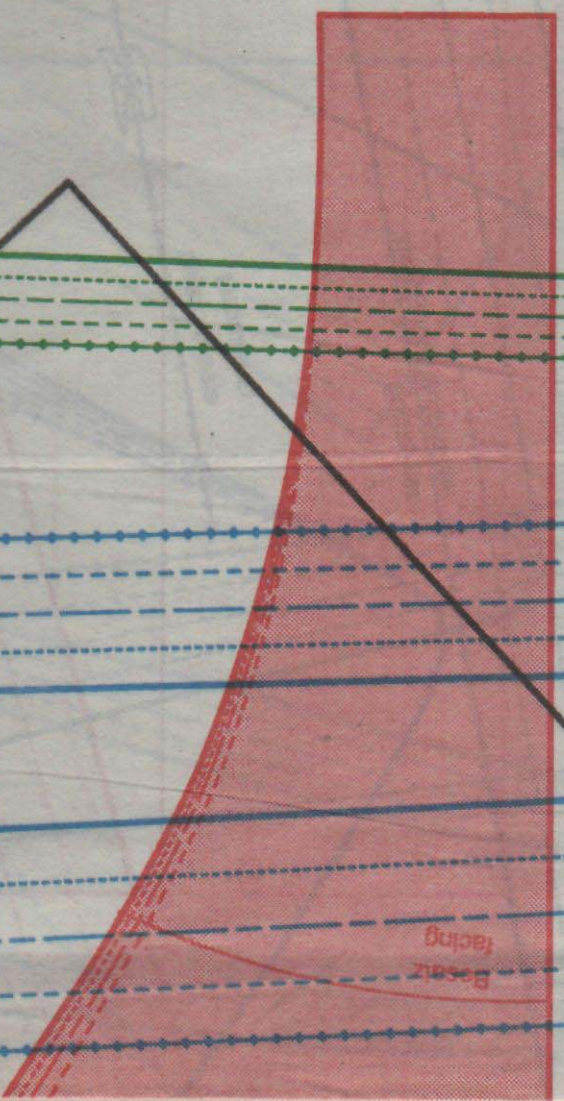
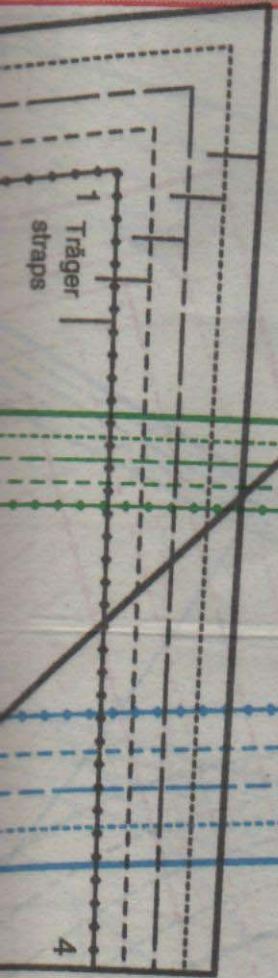
Träger  
straps

4





Suchnummer  
Reference numbers



#

#